



PUNJAB STATE TRANSMISSION CORPORATION LIMITED

(Regd. Office: PSEB Head Office, The Mall, Patiala)

OFFICE OF THE CHIEF ENGINEER / SLDC
SLDC Building, 220KV Grid Sub-Station, Ablowal, Patiala-147001, India
Contact No.: 0175-2365901, 2366007, 2365340 (Fax), 96461-18007 (M)
<http://www.punjabslcdc.org>, <http://www.pstcl.org>

Expression of Interest (EOI)

EOI No . : 117 /SLDC/ 2020

Subject : Invitation of Expression of Interest (EOI) for implementing Expert Message Management System (EMMS) in PSTCL.

1.0 Back Ground :

Punjab State Load Dispatch Centre (SLDC) at Ablowal(Patiala) is responsible for carrying out real time operations for grid control and dispatch of electricity within the state through secure and economic operation of the State grid in accordance with Grid Standards and State Grid Code. Online real-time data from a limited number of important 220KV & 132KV substations, generating substations & interstate tie-lines substations is available at SLDC through SCADA/EMS. Online electrical data from RTUs installed at various locations and other states utilities falling in Northern Regional Grid is also available in the SLDC via Northern Regional Load Dispatch Centre(NRLDC) through communication links over OPGW.

To effectively control/manage the grid, message(s) are being delivered by SLDC control centre to predetermined remote Grid Sub-stations/locations either through telephonically/SMS on mobiles who further deliver/relay the message to down the line Sub-Stations. Proper & Timely delivery/receipt of such messages(s)/SMS by SLDC control/ remote sub-station(s) respectively is essential for taking timely action by Dispatcher at SLDC control room and/or sub-station operator sitting at remote locations(approx. 210 nos.) as per Annexure –I attached, which may also change.

2.0 System Requirements:

To avoid failure and cut delay in delivery of message(s) (written in MS office/pdf format etc.)/SMS issued by SLDC for power regulations, PSTCL intends to implement expert messaging system to automate this activity with the following objectives in mind:

- i) Single/Multiple messages/SMS will be sent to one/many remote locations by SLDC. There will be provision in the system to retry attempts (software/user configurable) to send the message(s) before declaring it as “Message Transfer Failed”. On successful transfer of message/SMS, system will automatically generate message showing “Message Sent OK/Successfully”.
- ii) Operator/Recipient of message /SMS will accept the message/messages and will acknowledge the same to SLDC control room. In case of non-receipt of complete

- message by the Operator/Recipients, SLDC control room shall be informed automatically and SLDC will resend the message to remote location.
- iii) The system shall also be capable to send audible oral messages and also convert the text message to pre-recorded audible announcements.
 - iv) The system shall be capable to generate group messages to selected groups through menu driven display system, in a pre-determined sequential order with overriding facility.
 - v) Messages/SMS sent by SLDC will be displayed alongwith time & date etc. on Digital LED/LCD based display device at remote locations. In addition, as and when, new message is received, operator will be informed through audible alarm also.
 - vi) There will be automatic/time configurable based scrolling facility available for the Messages/SMS being received /displayed at remote locations to facilitate the operator.
 - vii) All such events i.e. Messages/SMS sent out by SLDC, received/acknowledged at remote locations etc. shall be recorded by the system at SLDC and at remote locations.
 - viii) Reporting system capable of generating various types of reports in MS office(word/excel etc) e.g. successful messages/SMS, failed messages/SMS, acknowledgement reports. etc. shall also be part of the Messaging system.

3.0 EOI Invitation :

- 3.1 Through this EOI, proposals are invited from interested parties having relevant experience in similar field to offer/demonstrate their technology/solutions which may cater to the needs of PSTCL as mentioned herein and further through detailed discussions /deliberations to assist in finalizing the technical specifications. Necessary literatures/ brochures etc shall also be supplied by the parties alongwith EOI. The solution proposed shall be based on latest technology, preferably a proven technology in a cost effective manner. Through this process, PSTCL anticipate to frame detailed technical specifications based on the recent technologies available in market.
- 3.2 The Interested Parties are also requested to provide details of tentative budgetary requirements for implementing the said Expert Messaging System(EMMS) in PSTCL .

It may kindly be noted that :-

- i) The EOI notice mention only the conceptualized requirements of PSTCL visualized at present.
- ii) By merely participating in EOI , the parties shall not reserve the right to qualify them as bidder.
- iii) Each participant shall be requested to give a detailed presentation of the proposed solution at Patiala for which a minimum 7 days' notice shall be given in advance. The presentation shall cover introduction about company, technical solution to be offered, their financial position preferably over last 5 years , past experience as per PO details, user performance certificates etc. A softcopy of the presentation & other supporting documents on CD/DVD/Pen drive shall also be supplied to PSTCL in advance.
- iv) The parties shall arrange the necessary tools/kits, Laptop etc. for giving presentation, demo of their solution etc..
- v) All costs associated with the preparation, presentation, demonstration, submission of any documents including tour & travel etc. shall be borne by the parties themselves.

PSTCL will in no case be responsible or liable for any costs incurred or otherwise by them, regardless of the conduct or outcome of this EOI.

vi) PSTCL reserve rights to decide the outcome or of any other matter related to this EOI and subsequent tendering ,etc.

4.0 EOI formats & submission :

4.1 The parties shall submit the basic information/data, as per the prescribed format attached (Annexure-II) as a part of EOI.

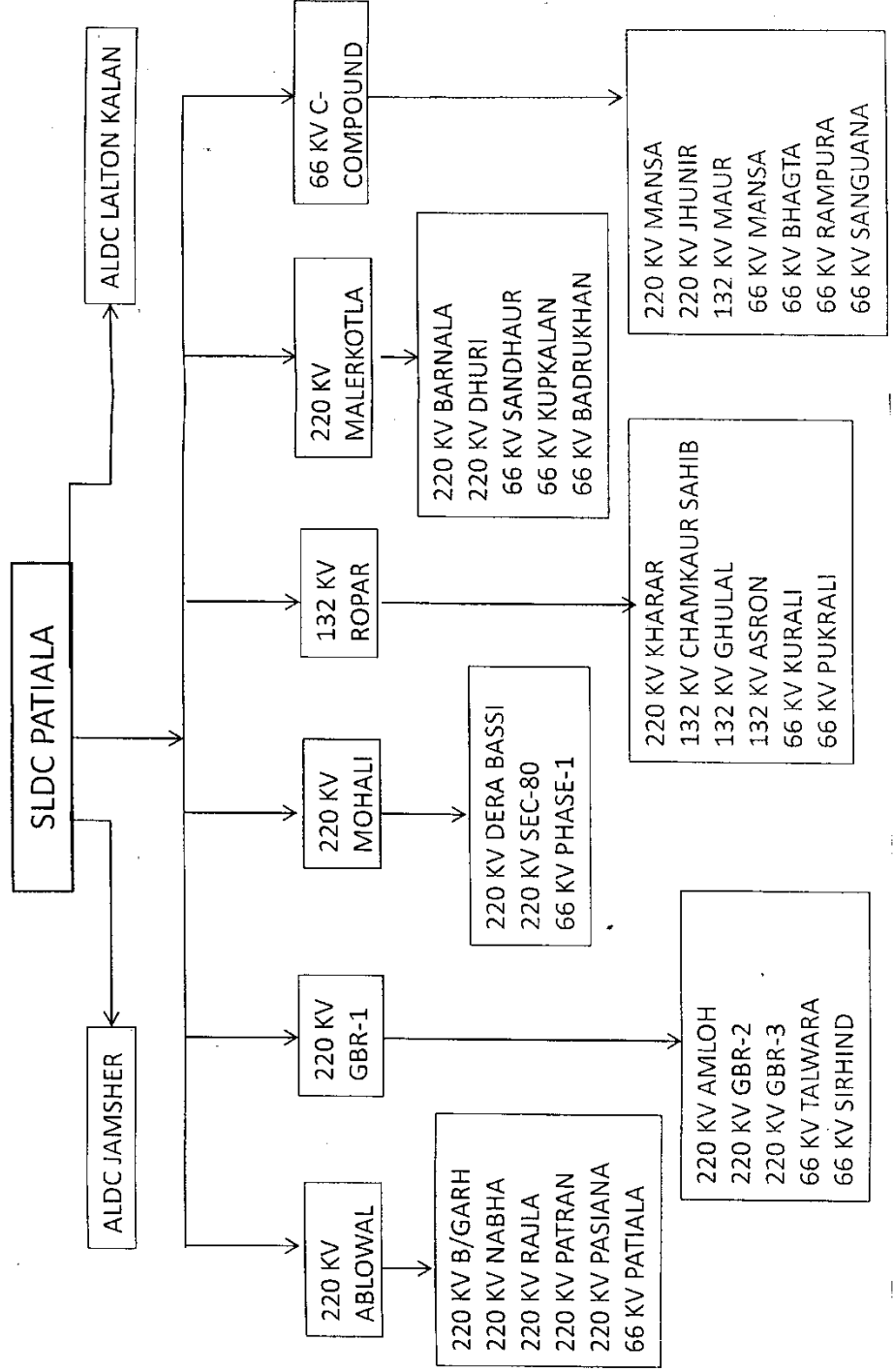
4.2 The parties may submit quadruplicate sets of EOI in a sealed cover subscribed as “ EOI No. 117/SLDC/2020 for EMMS” up to 14.30hrs on due date (i.e. 24-5-2013) which shall be opened at 15.00hrs on the same day in the office of undersigned. In case of holiday on due date, the same shall be received & opened on next working day at the same time & venue.

4.3 The EOI shall be valid for a period of 180 days from date of its opening.

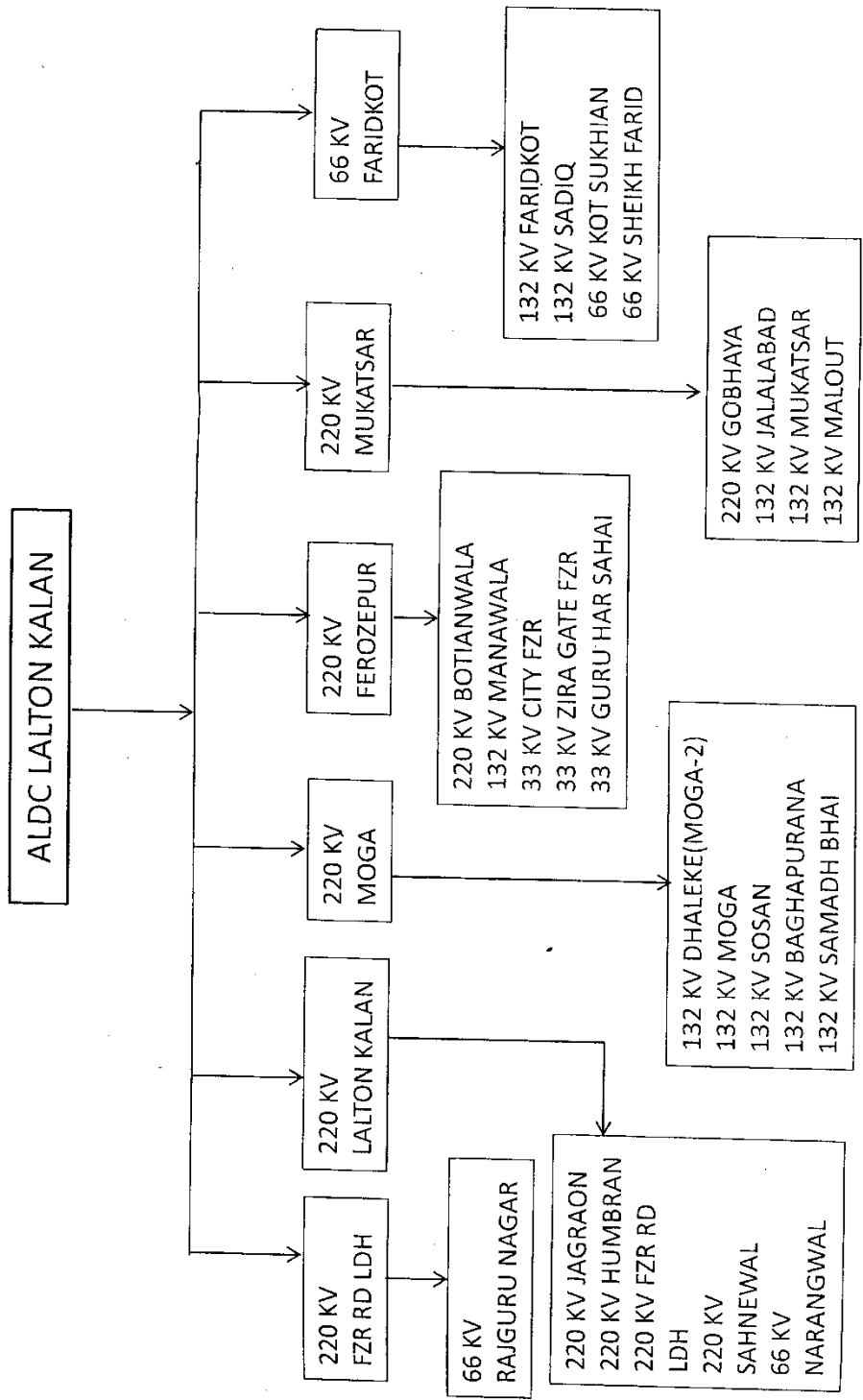
5.0 For any further query or clarification, the interested parties may contact undersigned through e-mail <http://www.punjabslfdc.org> or <http://www.pstcl.org> or on phone.

Dy. Chief Engineer/ SLDC(P),
PSTCL, Ablawal, Patiala.
Mob: 9646118007

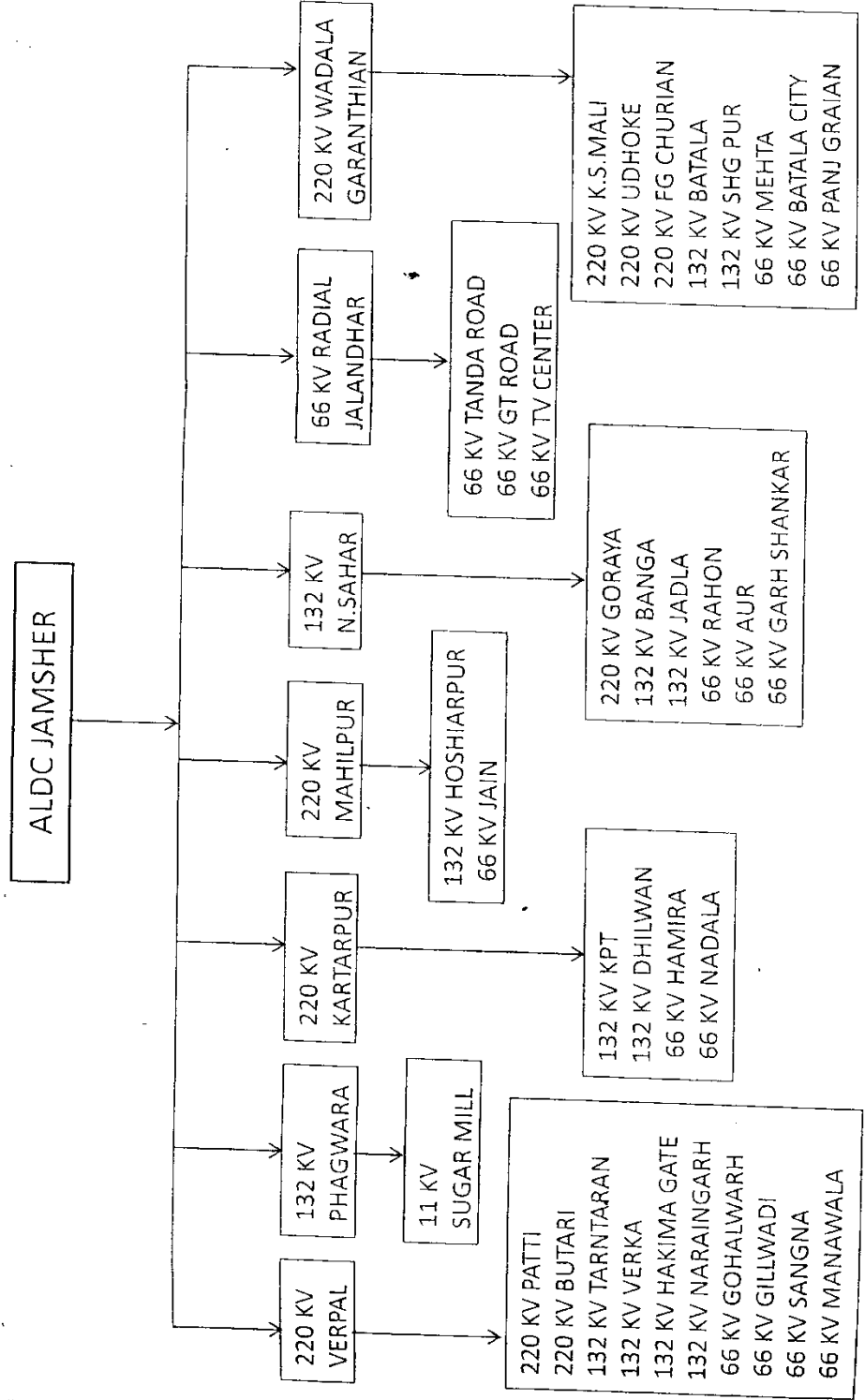
EXPRESS MESSAGE MANAGEMENT SYSTEM (EMMS) IN PSTCL



EXPERT MESSAGE MANAGEMENT SYSTEM (EMMS) IN PSTCL



EXPERT MESSAGE MANAGEMENT SYSTEM (EMMS) IN PSTCL



Subject: Expert Message Management System (EMMS) in PSICL

Name of Sending S/Stn.	Name of Receiving Sub-Station	Vodafone Mobile No.
220KV S/S Ablowal (Patiala)	220KV Bahadurgarh ---220KV Rajpura	96461-12172 -----96461-12173
96461-12171	220KV Nabha	96461-18935
	220KV Rajla	96461-12183
	220KV Patran	96461-12177
	66KV Passiana (City Cut)	96461-18920
	66KV Patiala (City Cut)	96461-18921
220KV G-1 Gobindgarh	220KV Amlah	96461-12204
96461-12200	220KV G-2 Gobindgarh	96461-12198
	220KV G-3 Gobindgarh	96461-12138
	66KV Talwara	96461-12146
	66KV Sirhind	96461-18192
220KV Mohali	220KV Dera Bassi	96461-12178
96461-12178	220KV Sector-80, Mohali	96461-19300
	66KV Phase-1, Mohali	96461-19039
132KV Ropar	220KV Kharar	96461-12179
96461-12180	132KV Chamkaur Sahib	96461-12182
	132KV Ghulal	96461-12199
	132KV Asron	96461-12185
	66KV Kurali	96461-19030
	66KV Purkhali	96461-19044
66KV C-Compound Bathinda	220KV Mansa	96461-12239
96461-14453	220KV Jhunir	96461-15240
	132KV Mour	96461-15241
	66KV Mansa	96461-15244
	66KV Bhagta	96461-15238

S of 11

	66KV Rampura	96461-15277
	66KV Sanguana	96461-14730
220KV Malerkotla	220KV Barnala	96461-12238
96461-12175	220KV Dhuri -----220KV Sunam	96461-12184 ----- 96461-12175
	66KV Sandhour	96461-19003
	66KV Kup Kalan	96461-18976
	66KV Badrukhan	96461-18985
		96461-12176
220KV Sunam	66KV Chhajli	96461-18966
	66KV Sunam	96461-18994
	66KV Longowal	96461-18971
	66KV Lehra Gagga	96461-18964

Goat 11

Name of Sending S/Stn.	Name of Receiving Sub-Station	Vodaphone Mobile No.
Sub ALDC Lalton Kalan		
	220KV FZP Rd. Ludhiana	96461-19317
		96461-12072
	66KV Rajguru Ngr.	96461-16198
	220KV Lalton Kalan	96461-12186
	220KV Jagraon	96461-12203
	220KV Hambran	96461-12098
	220KV FZP Rd Ludhiana	96461-12072
	220KV Sahnewal	96461-12187
	66KV Narangwal	96461-12106
	220KV Moga	96461-12258
	132KV Dhaleke	96461-12260
	132KV Moga	96461-12259
	132KV Sosan	96461-14483
	132KV Bagha Purana	96461-14262
	132KV Samad Bhai	96461-14263
	220KV Ferozepur	96461-12251
	220KV Botianwala	96461-12253
	132KV Manawala	96461-12252
	33KV City Ferozepur	96461-12279
	33KV Zira Gate FZP	96461-15273
	33KV Guru Har Sahai	96461-15290
	220KV Muktsar	96461-12244
	220KV Gobaya	96461-12247
	132KV Jalalabad	96461-12248
	132KV Muktsar	96461-12245
	132KV Malout	96461-12250
	66KV Faridkot	96461-15262
	132KV Faridkot	96461-12256
	132KV Sadiq	96461-12257
	66KV Kot Sukhia	96461-12674
	66KV Sheikh Farid	96461-96676

7 of 11

Name of Sending S/Stn.	Name of Receiving Sub-Station	Vodafone Mobile No.
Sub ALDC Jamsher		96461-19320
	220KV Verpal	96461-12206
		96461-12212
	220KV Patti	96461-12215
	220KV Butari	96461-12214
	132KV Tarn Taran	96461-13153
	66KV Gohalward	96461-12221
	132KV Verka	96461-12209
	132KV Naraingarh	96461-12208
	132KV Hakima Gate	96461-13844
	66KV Gillwadi	96461-13827
	66KV Sangna	96461-13845
	66KV Manawala	96461-12277
	220KV Wadala Granthian	96461-12211
		96461-12228
	132KV Batala	96461-12226
	132KV Shri Hargobind Pur	96461-12235
	220KV Fattehgarh Churian	96461-13889
	220KV Kotli Surat Mali	96461-13874
	66KV Mehta	96461-13857
	66KV Panj Graian	96461-13834
	66KV Batala City	96461-12167
	220KV Udhoke	96461-12156
	220KV Kartarpur	96461-12168
		96461-16836
		96461-16839
		96461-12156
	220KV Mahilpur	96461-12159
		96461-16806
	132KV Hoshiarpur	96461-12164
	66KV Jain	
	132KV Phagwara	

2017

	11KV Sugar Mill Phagwara	96461-16788
66KV Radial Jalandhar		
	66KV Tanda Rd. Jalandhar	96461-16760
	66KV Chhitti	96461-16752
	66KV TV Centre, Jalandhar	96461-16757
132KV Nawanshahar		96461-16761
	220KV Goraya	96461-12161
	132KV Bangan	96461-12188
	132KV Jadia	96461-12162
	66KV Rahon	96461-16848
	66KV Aur	96461-16847
	66KV Gar Shankar	96461-16849
220KV Goraya		96461-16858
	132KV Phillaur	96461-12188
	66KV Rurka Kalan	96461-12189
	66KV Apra	96461-16855
	66KV Dosanj Kalan	96461-16854
		96461-16856

Subject: Expert Message Management System (EMMS) in PSTCL

Sr.No.	Name of Sub-Station	Vodafone Mobile No.
1.	220 KV Mahil Kalan	96461-24489
2.	220KV Lalru	96461-07964
3.	220KV Sultanpur	96461-12154
4.	220KV Kanjli	96461-06734
5.	220KV Mahilpur	96461-18311
6.	220KV Rahana Jatan	96461-06721
7.	220KV Mall Mandi Amritsar	96461-12224
8.	220KV Sakatri Bagh, Amritsar	96461-12210
9.	220KV Civil Lines, Amritsar	96461-12220
10.	220KV Pasiona	96461-18339
11.	220KV Agol Kothi	96461-21373
12.	220KV Chola Sahib	96461-13894
13.	220KV Mansa	96461-12239
14.	220KV Bajakhana	96461-12237
15.	220KV Kot-Karore	96461-12255
16.	220KV Katore wala (Malot)	96461-18362
17.	220KV Dhandari Kalan-1	96461-12193
18.	220KV Dhandari Kalan-2	96461-12194
19.	220KV Doraha	96461-12195
20.	220KV Kohara	96461-12202
21.	220KV Ajit wal	96461-15246
22.	220KV Himatpura	96461-20629
23.	220KV Mastewala	96461-17959
24.	220KV Gobindgarh-4	96461-24464
25.	220KV Pakhowal	96461-12114
26.	220KV Ikolaha	96461-12134
27.	220KV Gaunsgarh	96461-12069
28.	220KV Bassi Pathana	96461-12134
29.	220KV Kakrala	96461-18942
30.	220KV Udhoke	96461-13834

10 of 11

Sr.No.	Name of Sub-Station	Vodafone Mobile No.
1.	132 KV Anandpur Sahib	96461-18269
2.	132KV Nakodar	96461-18300
3.	132KV Noormahal	96461-18300
4.	132KV Kotla Jagan	96461-12166
5.	132KV Children Park Jalandhar	96461-18387
6.	132KV Urban Estate Jalandhar	96461-16850
7.	132KV PIMS Hospital, Jalandhar	96461-18303
8.	132KV Focal Point, Jalandhar	96461-12572
9.	132KV Khera Mandir	96461-06746
10.	132KV Science City	96461-18305
11.	132KV Chohal	96461-12157
12.	132KV Tanda	96461-12160
13.	132KV Alawalpur	96461-12152
14.	132KV Khanpur	96461-16766
15.	132KV Kathu Nangal	96461-20676
16.	132KV Majitha	96461-12222
17.	132KV Verka	96461-18333
18.	132KV GT Rd. Amritsar	96461-12221
19.	132KV Pakharpura	96461-12225
20.	132KV Naraingarh	96461-12236
21.	132KV Gate Hakima, Amritsar	96461-12209
22.	132KV Khassa	96461-12208
23.	132KV Power Colony, Amritsar	96461-12207
24.	132KV Dhariwal	96461-12223
25.	132KV Gurdaspur	96461-12234
26.	132KV Pathankot	96461-12233
27.	132KV Tibber	96461-12231
28.	132KV Mamoon	96461-13489
29.	132KV Beas	96461-12232
30.	132KV Jandiala Guru	96461-12216
31.	132KV Tangra	96461-12217
32.	132KV Akalgadda	96461-12218
		96461-12219

33	132KV Mour	96461-12241
34	132KV Gidderbaha	96461-12242
35	132KV Balluana	96461-18197
36	132KV IGC Bathinda	96461-12240
37	132KV Badal	96461-12243
38	132KV Golia	96461-12553
39	132KV Kotkapura-1	96461-12264
40	132KV Kotkapura-2	96461-12265
41	132KV Firozshah	96461-12254
42	132KV Abohar	96461-18359
43	132KV Sarainaga	96461-18360
44	132KV Badhi Kalan	96461-12190
45	132KV Dharmkot	96461-12191
46	132KV Swadi Kalan	96461-12192
47	132KV Bilas Pur	96461-12196
48	132KV Sihora	96461-12197
49	132KV Seh	96463-00158

Annexure-II

EOI Format

A) Basic details:

- 1) Name of party :
- 2) Address :
- 3) Contact person:
(Phone/Fax/E-mail Id)
- 4) Experience :
- 5) Financial performance/details of the company :
- 6) Technical team members details alongwith their qualification & experience:

B) Technical details :

- 1) Details of solution offered (Attach details) :
- 2) Details of requirements:
 - a) Hardware
 - b) Software
 - c) Communication
 - d) Others, if any

C) Financial Proposal :

- i) Estimated cost (alongwith item wise breakup of prices):