

Office Order No. 198 /SE/HR & Admn.


Dated: 16/03/2021

As per decision taken by the Board of Directors of PSTCL in its 65th meeting held on 25/02/2021 at VIP Guest House, Mohali against CE/SLDC Agenda No. 01/CE/SLDC dated 17/02/2021, circulated vide Company Secretary, PSTCL, Patiala U.O. NO. 350/BOD/65.7/PSTCL dated 12/03/2021:-

1. The post of SE/Communication, Ludhiana is hereby shifted from SLDC Organization to P&M Organization alongwith Communication Design, CO&C divisions, CO&C Sub-Divisions, T&C cell and PLC Lab. The office of Sr.Xen/Communication Design is also hereby shifted from SLDC building at Ablowal, Patiala to the P&M office at Ludhiana.
2. Further, the administrative control of existing SCADA/EMS cell and SLDC Design cell are hereby shifted from SE/Communication, Ludhiana to SE/Open Access under SLDC Organization.
3. The revised structure of P&M Organization alongwith Communication wing is as per Annexure-I.
4. The revised structure of SLDC Organization is as per Annexure-II.
5. The total sanctioned strength of PSTCL shall remain same i.e. 5159 (Annexure-III).

The remaining organization structure of PSTCL shall remain same.

This issues with the approval of competent authority.


Dy.CE/HR & Admn.,
PSTCL, Patiala.


Endst. No. 3328/48 /SE/HR & Admn.

Dated: 16/03/2021

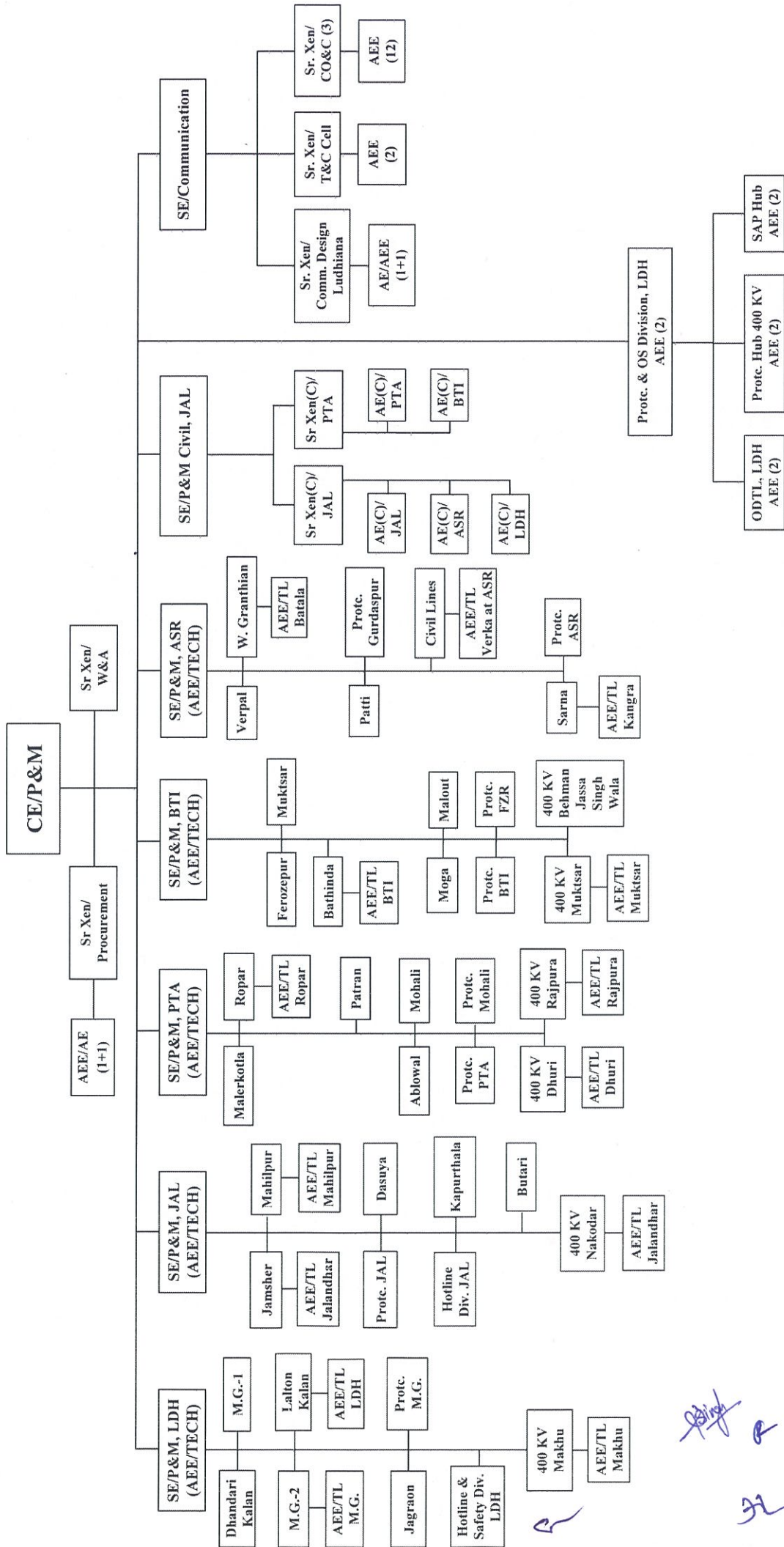
Copy of above is forwarded to the following for information and further necessary action, please:-

1. Principal Secretary to Government of Punjab, Finance Department, Civil Secretariat, Punjab, Chandigarh.
2. Additional Chief Secretary to Government of Punjab, Department of Power, Mini Secretariat, Sector-9, Chandigarh.
3. Secretary, Punjab State Electricity Regulatory Commission, Site No.3, Sector - 18A, Madhya Marg, Chandigarh.
4. CMD, PSPCL, Patiala.
5. PS to CMD, PSTCL, Patiala.
6. Sr.PS to Director/F&C, PSTCL, Patiala.

7. PA to Director/Tech., PSTCL, Patiala.
8. PA to Director/Admn., PSTCL, Patiala.
9. All EICs/CEs of PSTCL.
10. Chief Engineer/HRD, PSPCL, Patiala.
11. Secretary BBMB, Sector-19B, Madhya Marg, Chandigarh.
12. CFO, PSTCL, Patiala.
13. All Dy. CE/SEs of PSTCL.
14. Dy. CE/ Personnel, PSPCL, Patiala.
15. SE/IT, PSTCL, Patiala.
16. CAO (F&A), PSTCL, Patiala.
17. Company Secretary, PSTCL, Patiala.
18. All ASEs/Sr. Xens of PSTCL.
19. All Dy. CAOs of PSTCL.
20. All Dy. Secretaries/Under Secretaries of PSTCL.
21. All AEEs/AEs/AOs/Sectional Heads of PSTCL.


Dy.CE/HR & Admn.,
PSTCL, Patiala.

ORGANISATION STRUCTURE OF P&M



[Handwritten signatures and initials]

Sr.No	Name of Post	CE		CE Office		SE/P&M Civil Circle, Jld		Civil Mtc. S/D (5)		P&M Circle SE(6)		P&M Div. (25)		Mtc. Gangs (25)		Sub Stations				TL		Protection				SE (Communication)				No of Sanctioned Posts				
		W&A	Proc.	SE	Civil Mtc. Divn (2)	S/D	SE(6)	Div. (25)	Gangs (25)	400 KV (6)	220 KV (102)	132/66/11 KV (29)	132/11 KV (35)	S/D (14)	Div. (9)	400KV Prot. Hub	SA&P Hub	ODT Lab	S/D	Div. (14)	400KV Prot. Hub	Div. (9)	400KV Prot. Hub	SA&P Hub	ODT Lab	SE	Comm. Design, Ludhiana	CO&C Divn (3)	CO&C S/Ds (12)		T&C Cell	PLC LAB		
39	Circle Assistant/Office Assistant (General) Scale-1	1																							1								2	
40	UDC (General)/Office Assistant (General) Scale-2	2	1	1	2	5	5	25																	1	3							61	
41	LDC/Typist	1	1	1	2		5	25																	1	1	3	12	1				183	
42	Dy. Secy. Legal																																0	
43	Under Secy. Legal																																0	
44	Law Officer Grade-I																																0	
45	Law Officer Grade-II																																0	
46	Telephone Mechanic																											40	4	2			46	
47	Telephone Attendant																																0	
48	Foreman/Elect.														25																		25	
49	Fitter/Mistary Mech.																																6	
50	AAE/Elect.														25	30	102	29	35	14	9	1	1	1	1	2							249	
51	JE/S/Strn.		1					25								306	87	105	42	18	2	2	2	4	4								596	
52	SSA														24	408	116	140	36	4	4	4	2	2	6								734	
53	Lineman														100	6			210														322	
54	ASSA															121	29		210														150	
55	ALM									15					150	12	287	87	210															882
56	JE-IT																																0	
57	JE-II (Civil)				2	10																											12	
58	JE-II/Comm.																																19	
59	JE-III/Comm.																																40	
60	Electrician Gr-I																																8	
61	Electrician Gr-II														25																		25	
62	Store Keeper																																0	
63	Store Verifier																																0	
64	Architect																																0	
65	Dy.Manager-IT																																0	
66	Assistant Manager-IT																																0	
67	Driver	14																															14	
68	Hawalidar	1		1																						1							8	
69	Peon	1	1	1	2	5	5	25								6	102	29	14	9	1	1	1	1	2	1	2	3	12	2			225	
70	Cook-cum-Chowkidar																																6	
71	JDM																																0	
72	CableJointer (Foreman)																																0	
73	Cable Jointer																																0	
74	ASK																																0	
75	RTM																																0	
76	OC																																0	
77	Azoman																																0	
78	TPO																																0	

Handwritten notes and signatures at the bottom of the page, including the number '15' and various scribbles.

Manpower Structure of P&M Organisation

CE/P&M	CE Office			SE/P&M CIVIL Circle, Jalandhar		Civil Mtc. Div./ Jalandhar, Patiala		Civil Mtc. S/D (5)		P&M Circle (5)		P&M Division (25)		P&M Mtc. Gang (25)		
	Designation	Sanctioned	W&A Sanctioned	Procurement Sanctioned	Designation	SE Sanctioned	Designation	Proposed	Designation	Sanctioned	Designation	Sanctioned	Designation	Sanctioned	Designation	Sanctioned
EIC/CE	1	1	1	1	SE/CIVIL	1	Sr.Xen/Civil	2	AE/Civil	5	SE/Elect	5	Sr.Xen/Elect	25	AAE/Elect	25
PS	1	--	1	1	PA	1	JE/Civil	2	JE/Civil	10	AAE/Elect	5	JE/S/In.	25	Foreman/Elect	25
LDC/Typist	1	--	1	1	CHD	1	Divn.Acct	2	UDC/General	5	CHD	5	Divn. Acct	25	Lineman	100
Hawaladar	1	--	1	1	CHD	1	UDC/Acctt.	2	Peon	5	Draftsman	5	UDC/General	25	ALM	150
Peon	1	1	1	--	CHD	1	UDC/Gen.	2	Total	25	Supdt. Gr-II	5	LDC/Accounts	25	Electrician Gr-II	25
Total	5	1	1	--	LDC/Typist	1	LDC/Typist	2	PA	5	UDC/Gen.	5	LDC/Typist	25	Total	325
		1	1	--	Hawaladar	1	Peon	2	UDC/Gen.	5	LDC/Typist	5	Peon	25		
		1	1	--	Total	7	Total	14	LDC/Typist	5	Total	175	Total	175		
		1	1	--	Circle Asstt.	1	Circle Asstt.	1	ALM*	15	ALM*	15	* ALM is to operate oil filtration sets			
		2	2	--	UDC/General	2	UDC/General	2	Hawaladar	5	Hawaladar	5				
		1	1	1	LDC/Typist	1	LDC/Typist	1	Peon	5	Peon	5				
		14	14	--	Driver	14	Driver	14	*Cook-cum-Chowkidar	6	*Cook-cum-Chowkidar	6	*Cook-cum-chowkidar 5 no. for 400 KV S/Stns. & 1 no. for Kangra Guest House.			
		1	1	1	Peon	1	Peon	1	Total	71	Total	71				
		24	24	6	Total	6	Total	6								

*Civil Maintenance Work of P&M Circle Jalandhar, Amritsar & Ludhiana shall be under Civil Maintenance Division, Jalandhar
 *Civil Maintenance Work of P&M Circle Bathinda & Patiala shall be under Civil Maintenance Division, Patiala

Designation	Sanctioned Strength of Sub Stations			Accounting Staff at 400KV S/Stns. (Dhuri, Nakodar, Makhu & Rajpura)		
	400KV (6) Operations Sanctioned	220KV Maintenance (102) Sanctioned	132/66/11KV (29) Sanctioned	132/11KV (35) Sanctioned	Designation	Sanctioned
Sr.XEN / Elect.	6	--	--	--	Divn. Acct.	4
AAE/Elect.	--	6	--	--	LDC/Accounts	4
AE/Elect.	24	--	102	29	Total	8
AAE/Elect.	24	6	102	29		
JE/S/In.	--	6	306	87		
Lineman	--	6	--	--		
SSA	24	--	408	116		
ASSA	--	12	121	29		
ALM	--	6	287	87		
UDC/General	6	--	--	--		
LDC/Typist	--	102	102	--		
Peon	6	--	102	29		
Fitter/Mech. Mistari/Tech/Elect.	--	6	--	--		
Electrician Gr-I	--	6	--	--		
Total	90	42	1530	406		

2/

Designation	TL		Protection				Hotline & Safety Divn.	
	S/D (14) Sanctioned	Designation	Div. (9) Sanctioned	400KV Protection Hub Sanctioned	SA&P Hub Sanctioned	ODT Lab Sanctioned	Designation	Div.(2) Sanctioned
AAE/Elect.	14	Sr.XEN/Elect.	9	--	--	--	Sr.XEN/Elect.	2
AAE/Elect.	14	AAE/Elect.	18	2	2	2	AE/Elect.	2
JE/S/In.	42	AAE/Elect.	9	1	1	1	AAE/Elect.	2
Lineman	210	JE/S/In.	18	2	2	4	JE/S/In.	4
ALM	210	SSA	36	4	4	2	Lineman	6
LDC/Typist	14	UDC/General	9	--	--	--	UDC/General	2
Peon	14	Divn. Acct.*	1	--	--	--	ALM	12
Total	518	LDC/Accounts*	1	--	--	--	LDC/Typist	2
		LDC/Typist	9	1	--	1	Peon	2
		ALM (OC)	--	--	--	4	Total	34
		Peon	9	1	1	1		
		Total	119	11	10	15		

Note: AEE/Elect. in ODT lab= 2 (1 no. AEE/IOS+1 no AEE/ODT lab)

*1 no. post of Divn. Acct. & 1 no. post of LDC/Accounts in Protection & OS Division, Ludhiana

SE/Comm. Ldh.		COMM. DESIGN, Ldh.		CO&C DIV. (3)		CO&C S/D (12)		T&C		PLC LAB	
Designation	Sanctioned	Designation	Sanctioned	Designation	Sanctioned	Designation	Sanctioned	Designation	Sanctioned	Desg.	Sanctioned
SE/Elect.	1	Sr.Xen/Elect.	1	Sr.Xen/Elect.	3	AEE/Elect.	12	Sr.Xen/Elect.	1	AEE/Elect.	1
AEE/Elect.	1	AEE/Elect.	1	JE-I/Comm.	3	JE-I/Comm.	12	AEE/Elect.	2	JE-II/Comm.	2
CHD	1	AE/Elect.	1	Divn. Actt.	3	JE-II/Comm.	36	JE-I/Comm.	4	Telephone Mech.	2
Supdt. GR-II	1	DHD	1	UDC/Accounts	3	ALM (Telephone Attendant)	104	JE-II/Comm.	2	ALM (Telephone Attendant)	1
Circle Assistant	1	Jr.S.S.	1	UDC/General	3	Telephone Mech.	40	Telephone Mech.	4	Total	6
PA	1	LDC/Typist	1	LDC/Typist	3	LDC/Typist	12	LDC/Typist	1		
UDC/General	1	Peon	2	Peon	3	Peon	12	Electrician Gr-I	2		
LDC/Typist	1	Total	8	Total	21	Total	228	Peon	2		
Hawaladar	1							Total	18		
Peon	1										
Total	10										

Distribution of Manpower under CO&C Sub-Divisions (12)

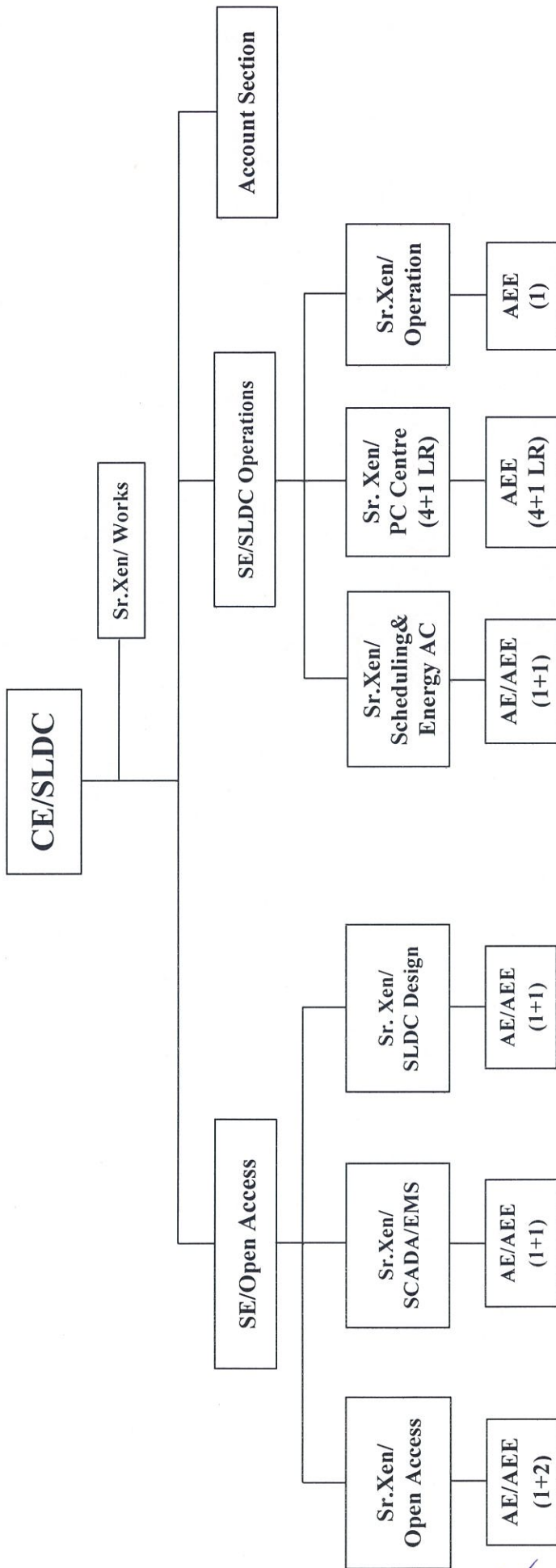
CO&C S/D	Designation	Amritsar Sanctioned	Jalandhar Sanctioned	Batala Sanctioned	Moga Sanctioned	Sarna Sanctioned	Muktsar Sanctioned	Ludhiana Sanctioned	Ropar Sanctioned	Patiala Sanctioned	Bathinda Sanctioned	Mandi Gobindgarh Sanctioned	Hoshiarpur Sanctioned	Total Sanctioned
AEE/Elect.	1	1	1	1	1	1	1	1	1	1	1	1	1	12
JE-I/Comm.	1	1	1	1	1	1	1	1	1	1	1	1	1	12
JE-II/Comm.	3	3	3	3	3	3	3	3	3	3	3	3	3	36
ALM (Telephone Attendant)	8	8	9	9	9	9	9	8	9	8	9	9	9	104
Telephone Mech.	4	4	3	3	3	3	3	4	3	4	3	3	3	40
LDC/Typist	1	1	1	1	1	1	1	1	1	1	1	1	1	12
Peon	1	1	1	1	1	1	1	1	1	1	1	1	1	12
Total	19	19	19	19	19	19	19	19	19	19	19	19	19	228

Distribution of CO&C Sub-Divisions under CO&C Divisions

S.No.	CO&C Division Amritsar	CO&C Division Ludhiana		CO&C Division Patiala
		CO&C S/D Amritsar	CO&C S/D Ludhiana	
1	AEE/CO&C S/D Amritsar	AEE/CO&C S/D Muktsar	AEE/CO&C S/D Mandi Gobindgarh	
2	AEE/CO&C S/D Hoshiarpur	AEE/CO&C S/D Ludhiana	AEE/CO&C S/D Bathinda	
3	AEE/CO&C S/D Batala	AEE/CO&C S/D Moga	AEE/CO&C S/D Patiala	
4	AEE/CO&C S/D Sama	AEE/CO&C S/D Jalandhar	AEE/CO&C S/D Ropar	

[Handwritten signatures and initials]

ORGANIZATION STRUCTURE OF SLDC



Handwritten signature and initials

Manpower Structure of SLDC Organisation

S.No	Name of Post	CE	CE Office		Open Access				SLDC Operations				No of Sanctioned Posts	
			Works	SLDC/ Account Section	SE	Sr.Xen/ Open Access	SCADA/EMS	Sr.Xen/ SLDC Design	SE	Sr.Xen/ Scheduling & Energy AC	PC Centre (4+1 LR)	Sr.Xen/ Operation		
1	CMD													0
2	Director													0
3	Company Secy.													0
4	EIC/Chief Engineer	1												1
5	SE/Elect.			1										2
6	Sr.XEN/Elect.		1				1	1	1				1	11
7	AEE/Elect.					2	1	1	1				5	11
8	AE/Elect.					1	1	1	1				4	4
9	SE/Civil													0
10	Sr.XEN/Civil													0
11	AEE/Civil													0
12	AE/Civil													0
13	IPRO													0
14	Information Officer													0
15	CFO													0
16	CAO													0
17	Dy.CAO													0
18	AO			1										1
19	SAS Acctt.			3										3
20	Divn. Acctt.													0
21	UDC Accounts/Office Assistant (Accounts)			3										3
22	LDC/Accounts													0
23	Dy.Secy. Stenography													0
24	Sr. PS													0
25	PS	1												1
26	PA				1									2
27	Sr. S. Stenographer													0
28	Jr. S. Stenographer		1			1	1	1	1				1	6
29	CHD													0
30	DHD													0
31	Draftsman													0
32	Dy. Secy.													0
33	Under Secy.													0
34	Dy.Manager-HR													0
35	Assistant Manager-HR													0
36	Suptd Grade-I		1											1
37	Circle Supdt.													0

2-10-2014

Manpower Structure of SLDC Organisation

S.No	Name of Post	CE	CE Office		Open Access				SLDC Operations				No. of Sanctioned Posts
			Works	SLDC/Account Section	SE	Sr.Xen/ Open Access	Sr.Xen/ SCADA/EMS	Sr.Xen/ SLDC Design	SE	Sr.Xen/ Scheduling & Energy AC	Sr.Xen/ PC Centre (4+1 LR)	Sr.Xen/ Operation	
38	Sr. Assistant/Jr. Officer (General)		1										1
39	Circle Assistant/Office Assistant (General) Scale-1												0
40	UDC (General)/Office Assistant (General) Scale-2		1										1
41	LDC/Typist	1	1	1			1	1				5	13
42	Dy. Secy. Legal												0
43	Under Secy. Legal												0
44	Law Officer Grade-I												0
45	Law Officer Grade-II												0
46	Telephone Mechanic												0
47	Telephone Attendant												0
48	Foreman/Elect.												0
49	Fitter/Mistary Mech.												0
50	AAE/Elect.												1
51	JE/S/Stn.				1								3
52	SSA												0
53	Lineman												0
	ASSA												0
55	ALM												0
56	JE-IT												0
57	JE-II (Civil)		1										1
58	JE-I/Comm.							1					1
59	JE-III/Comm.												0
60	Electrician Gr-I												0
61	Electrician Gr-II												0
62	Store Keeper												0
63	Store Verifier												0
64	Architect												0
65	Dy. Manager-IT												0
66	Assistant Manager-IT												0
67	Driver	1											1
68	Hawaldar	1			1								3
69	Peon	1	2	1			2	2				5	18
70	Cook-cum-Chowkidar												0
71	JDM												0
72	Cable Joiner (Foreman)												0

111

Manpower Structure of SLDC Organisation

S.No	Name of Post	CE	CE Office		Open Access				SLDC Operations			No of Sanctioned Posts		
			Works	SLDC/ Account Section	SE	Sr.Xen/ Open Access	Sr.Xen/ SCADA/EIMS	Sr.Xen/ SLDC Design	SE	Sr.Xen/ Scheduling & Energy AC	Sr.Xen/ PC Centre (4+1 LR)		Sr.Xen/ Operation	
73	Cable Jointer											0		
74	ASK											0		
75	RTM											0		
76	OC											0		
77	Azoman											0		
78	TPO											0		
79	DMO											0		
80	Carpenter											0		
81	Apprentice LM											0		
82	Test Mech.											0		
83	Telephonist											0		
84	Diesel Mech.(W/man)											0		
85	Fitter Gr-II											0		
86	AC Mech.											0		
87	AC/T-Mate/T-Mate											0		
88	T-Mate											0		
89	Divn.Suptd.											0		
90	Suptd Grade-II											0		
91	Cashier											0		
92	Data Entry Operator											0		
93	Labour Welfare Officer											0		
94	Programmer											0		
95	Computer Operator											0		
96	Record lifter											0		
97	Chowkidar											0		
98	Daftari											0		
99	Mali											0		
100	Sweeper-cum-chowkidar											0		
101	Chowkidar-cum-sweeper											0		
102	Sweeper											0		
103	Patwari											0		
	Total	6	9	9	4	8	8	8	7	4	9	20	5	89

-12-

Manpower Structure of SLDC Organisation

CE/SLDC		Sr.Xen/Works		SLDC/Account Section		SE/Open Access		Sr.Xen/Open Access		Sr.Xen/SCADA/EMS		Sr.Xen/SLDC Design	
Designation	Sanctioned	Designation	Sanctioned	Designation	Sanctioned	Designation	Sanctioned	Designation	Sanctioned	Designation	Sanctioned	Designation	Sanctioned
EIC/CE	1	Sr.Xen/Elect.	1	AO	1	SE/Elect.	1	Sr.Xen/Elect.	1	Sr.Xen/Elect.	1	Sr.Xen/Elect.	1
PS	1	Supdt. Gr-I	1	SAS Acctt.	3	PA	1	AEE/Elect.	2	AEE/Elect.	1	AEE/Elect.	1
LDC/Typist	1	JE/Civil	1	UDC/Acctt.	3	JE/S/Stn.	1	AE/Elect.	1	AE/Elect.	1	AE/Elect.	1
Hawaladar	1	Sr.Asstt.	1	LDC/Typist	1	Hawaladar	1	LDC/Typist	1	JE-I/Comm.	1	Jr.S.S.	1
Peon	1	UDC/General	1	Peon	1	Total	4	Jr.S.S.	1	Jr.S.S.	1	LDC/Typist	1
Driver	1	Jr.S.S.	1	Total	9			Peon	2	LDC/Typist	1	Peon	2
Total	6	LDC/Typist	1					Total	8	Peon	2	Total	7
		Peon	2					Total	8	Total	8		
		Total	9										

SE/SLDC Operations		Sr.Xen/ Scheduling & Energy AC		Sr.Xen/ PC Centre (4+1LR)		Sr.Xen/Operations	
Designation	Sanctioned	Designation	Sanctioned	Designation	Sanctioned	Designation	Sanctioned
SE/Elect.	1	Sr.Xen/Elect.	1	Sr.Xen/Elect.	5	Sr.Xen/Elect.	1
PA	1	AEE/Elect.	1	AEE/Elect.	5	AEE/Elect.	1
JE/S/Stn.	1	AE/Elect.	1	LDC/Typist	5	Jr.S.S.	1
Hawaladar	1	AAE/Elect.	1	Peon	5	LDC/Typist	1
Total	4	JE/S/Stn.	1	Total	20	Peon	1
		Jr.S.S.	1			Total	5
		LDC/Typist	1				
		Peon	2				
		Total	9				

Total Sanctioned Strength of PSTCL

Sr.No	Name of Post	No of Sanctioned Posts
1	CMD	1
2	Director	3
3	Company Secy.	1
4	EIC/Chief Engineer	4
5	SE/Elect.	16
6	Sr.XEN/Elect.	85
7	AEE/Elect.	113
8	AE/Elect.	172
9	SE/Civil	3
10	Sr.XEN/Civil	9
11	AEE/Civil	14
12	AE/Civil	12
13	IPRO	1
14	Information Officer	0
15	CFO	1
16	CAO	1
17	Dy.CAO	6
18	AO	22
19	SAS Acctt.	40
20	Divn. Acctt.	42
21	UDC Accounts/Office Assistant (Accounts)	54
22	LDC/Accounts	55
23	Dy.Secy. Stenography	1
24	Sr. PS	3
25	PS	6
26	PA	24
27	Sr. S. Stenographer	20
28	Jr. S. Stenographer	14
29	CHD	14
30	DHD	15
31	Draftsman	17
32	Dy. Secy.	2
33	Under Secy.	1
34	Dy.Manager-HR	1
35	Assistant Manager-HR	3
36	Suptd Grade-I	5
37	Circle Supdt.	0
38	Sr. Assistant/Jr. Officer (General)	21
39	Circle Assistant/Office Assistant (General) Scale-1	26
40	UDC (General)/Office Assistant (General) Scale-2	134
41	LDC/Typist	253
42	Dy. Secy. Legal	1
43	Under Secy. Legal	1
44	Law Officer Grade-I	1
45	Law Officer Grade-II	2
46	Telephone Mechanic	46
47	Telephone Attendant	0
48	Foreman/Elect.	25
49	Fitter/Mistary Mech.	6
50	AAE/Elect.	275
51	JE/S/Stn.	641
52	SSA	734
53	Lineman	383
54	ASSA	150
55	ALM	993
56	JE-IT	6

Sr.No	Name of Post	No of Sanctioned Posts
57	JE-II (Civil)	62
58	JE-II/Comm.	20
59	JE-II/Comm.	40
60	Electrician Gr-I	20
61	Electrician Gr-II	25
62	Store Keeper	4
63	Store Verifier	1
64	Architect	1
65	Dy.Manager-IT	2
66	Assistant Manager-IT	4
67	Driver	52
68	Hawaladar	29
69	Peon	382
70	Cook-cum-Chowkidar	6
71	JDM	0
72	CableJointer (Foreman)	0
73	Cable Jointer	0
74	ASK	5
75	RTM	0
76	OC	0
77	Azoman	0
78	TPO	0
79	DMO	0
80	Carpenter	0
81	Apprentice LM	0
82	Test Mech.	0
83	Telephonist	0
84	Diesal Mech.(W/man)	0
85	Fitter Gr-II	0
86	AC Mech.	0
87	AC/T-Mate/T-Mate	0
88	T-Mate	0
89	Divn.Supdt.	0
90	Suptd Grade-II	10
91	Cashier	0
92	Data Entry Operator	16
93	Labour Welfare Officer	0
94	Programmer	0
95	Computer Operator	0
96	Record lifter	0
97	Chowkidar	0
98	Daftari	0
99	Mali	0
100	Sweeper-cum-chowkidar	0
101	Chowkidar-cum-sweeper	0
102	Sweeper	0
103	Patwari	1
Total		5159

Handwritten signature and initials